



3 Bed House - Semi-Detached

4 Brettingham Drive
Allestree
Derby
DE22 2FH

£1,325 Per Calendar Month

Fletcher
& Company

4 Brettingham Drive
Derby
DE22 2FH



- Recently Built Semi-Detached Home
- Council Tax Band C
- Entrance Hall, Guest Cloakroom
- Lounge with French Doors Opening onto Rear Garden
- Modern Fitted Kitchen
- Three Bedrooms
- En-Suite & Family Bathroom
- Driveway Providing off Road Parking
- Private Enclosed Rear Garden
- Available Mid July 2026

This is a fantastic opportunity to let a recently-built three bedroom semi-detached home in this ever-popular residential location, with great access to local amenities and schooling at all levels.

This gas central heated and double glazed living accommodation comprises: entrance hall, guest cloakroom, kitchen, lounge, three bedrooms, en-suite shower room and family bathroom.

The property benefits from a driveway providing off road parking for two vehicles and a private enclosed rear garden with patio area.

This property is available Mid July and on a long term basis.





The Location

Allestree is a very popular residential suburb of Derby approximately three miles from the city centre and provides an excellent range of local amenities including the noted Park Farm shopping centre, excellent local schools at all levels and regular bus services. Local recreational facilities include Woodlands Tennis Club, Allestree Park with its golf course and fishing lake and Markeaton Park, also having a boating and fishing lake together with Kedleston Golf Course. There is easy access onto the A38 leading to the A50 and M1 motorway and the location is also convenient for the University of Derby, Rolls-Royce, Royal Derby Hospital and Toyota.

Council Tax Band C

Accommodation

Ground Floor

Entrance Hall

10'5" x 3'6" (3.18 x 1.08)

Composite entrance door with obscure glass provides access into the entrance hall with central heating radiator, wood effect flooring, staircase leading to the first floor and doors to cloakroom, lounge and kitchen.

Guest Cloakroom

6'8" x 3'1" (2.04 x 0.94)

With pedestal wash handbasin with mixer tap and splash-back, low level WC, central heating radiator, wood effect flooring and uPVC obscure double glazed window to front.

Lounge

16'6" x 14'8" (5.04 x 4.48)

With wood effect flooring, central heating radiator, door to useful under-stairs storage cupboard, uPVC double glazed window to rear and uPVC double glazed French doors opening onto rear patio.

Kitchen

10'5" x 7'5" (3.18 x 2.27)

Fitted with wall, base and drawer units with worksurface over and matching upstands, stainless steel sink drainer unit with mixer tap, built-in electric oven with integrated four ring gas hob, stainless steel splash-back and extractor unit over, integrated fridge/freezer, wall mounted boiler, central heating radiator, wood effect flooring and uPVC double glazed window to the front elevation.

First Floor

Landing

With access to roof space, smoke alarm, uPVC double glazed window to side and doors to three bedrooms and family bathroom.

Master Bedroom

10'5" x 9'10" (3.18 x 3.02)

With central heating radiator, uPVC double glazed window to front and door to en-suite shower room.

En-Suite

6'8" x 3'10" (2.04 x 1.17)

Partly tiled with a white suite comprising double shower enclosure with shower screen door, wall mounted wash handbasin with mixer tap, low level WC, central heating radiator, extractor fan and uPVC obscure double glazed window to front.

Bedroom Two

10'9" x 7'10" (3.28 x 2.41)

With central heating radiator and uPVC double glazed window to rear .

Bedroom Three

7'3" x 6'5" (2.21 x 1.97)

With central heating radiator and uPVC double glazed window to rear .

Family Bathroom

7'11" x 5'6" (2.42 x 1.70)

Partly tiled with a white suite comprising panelled bath with mixer tap and shower over with shower screen door, wall mounted wash handbasin with mixer tap and splash-back, low level WC, central heating radiator, wood effect flooring and extractor fan.

Outside

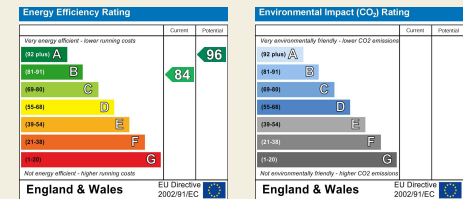
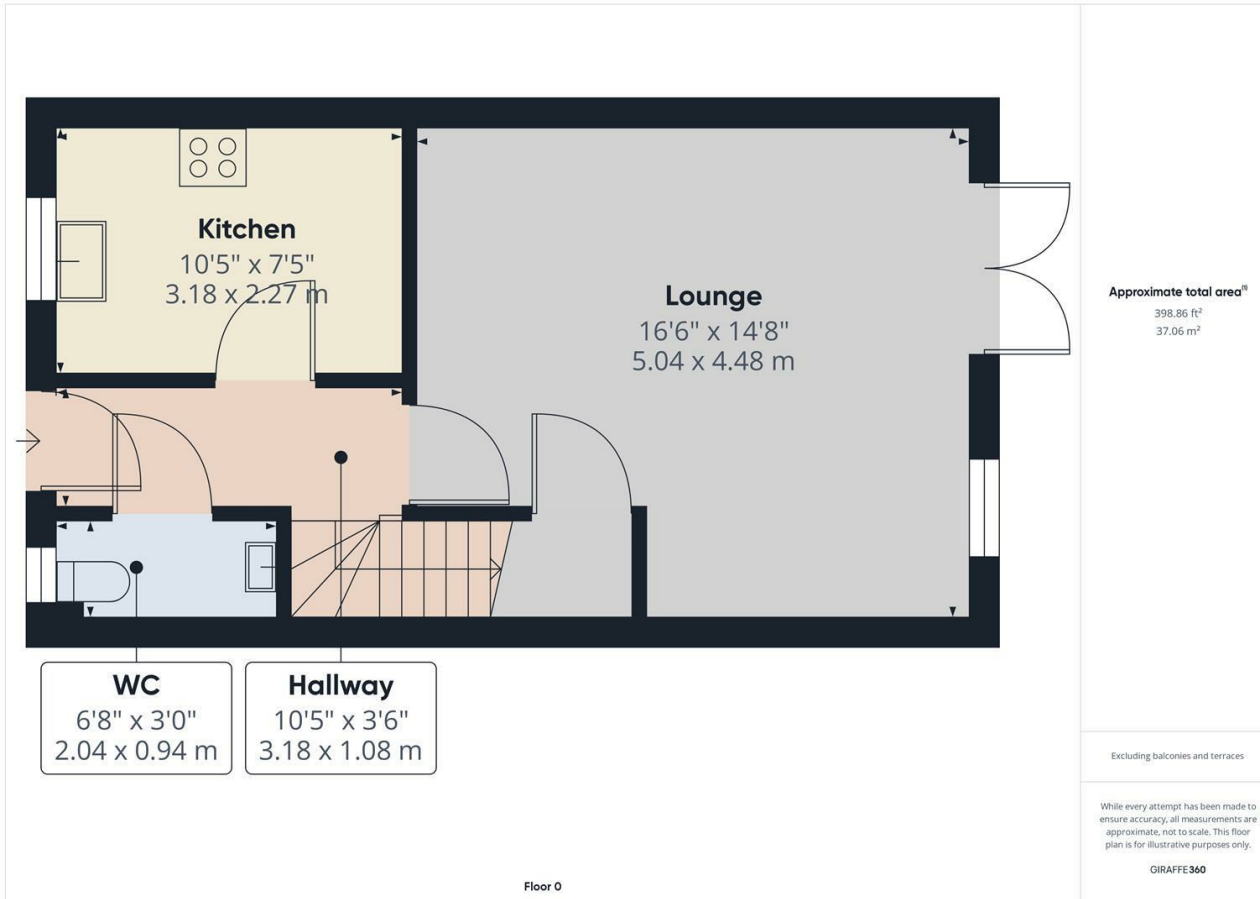
The property is set back behind a tarmac driveway providing off road parking with side access to the rear garden.

To the rear of the property is a private enclosed rear garden laid to lawn with patio enclosed by a fence panelled and stone walled boundary.

Duffield House
 Town Street
 Duffield
 Derbyshire
 DE56 4GD

T: 01332 843390

E: duffield@fletcherandcompany.co.uk
 www.fletcherandcompany.co.uk



These particulars do not constitute an offer or a contract neither do they form part of an offer or contract. The vendor does not make or give and Messrs. Fletcher & Company nor any person employed has any authority to make or give any representation or warranty, written or oral, in relation to this property. Whilst we endeavour to make our sales details accurate and reliable, if there is any point which is of particular importance to you, please contact the office and we will be pleased to check the information for you, particularly if contemplating travelling some distance to view the property. None of the services or appliances to the property have been tested and any prospective purchasers should satisfy themselves as to their adequacy prior to committing themselves to purchase.

Fletcher & Company